

## Douglas-fir Distribution Crossarms

### Boring Specifications

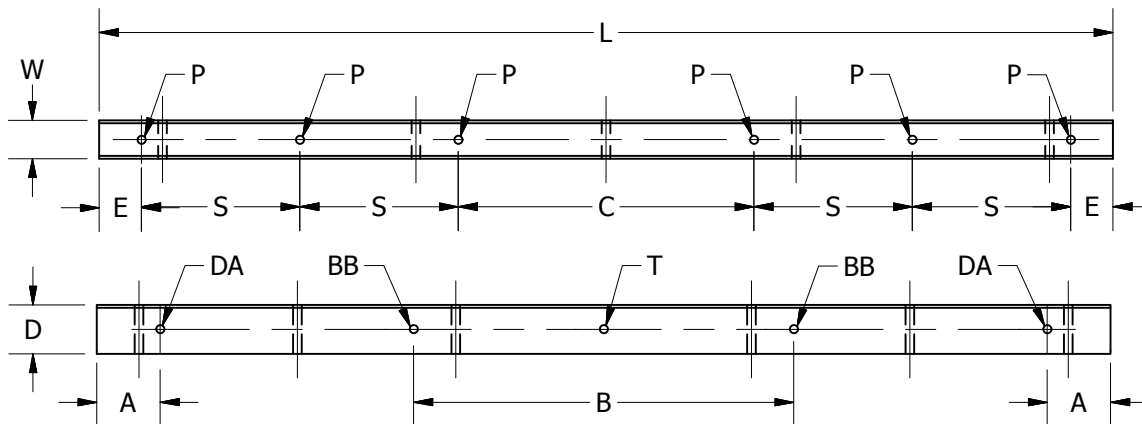
**Important:** When ordering crossarms, specify exactly what is required. If a verbal or written description is questionable, send a descriptive sketch or drawing which details the requirement. Orders for specially manufactured crossarms are not subject to cancellation if production has started, nor may they be returned if a mistake is made in ordering.

It is suggested that boring instructions be forwarded to us in the following manner:

1. Supply the applicable utility drawing or drawing number.
2. Reference BROOKS part number or previous production number.
3. Submit a sketch; preferably a completed copy of the ordering template below.
4. Use a verbal or written description that identifies the variables noted below.

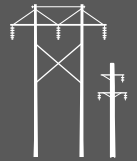
### Crossarm Ordering Template

Hole location, size, and orientation (vertical or horizontal) must be well specified. A template can assist in providing this data. The example template illustrated is for a 6-pin tangent crossarm with a symmetric pattern and horizontal brace bolt holes. This template can be adapted to other symmetrical configurations such as 2-pin and 4-pin. Please provide separate sketches for alley construction, unbalanced framing or offset patterns.



- |                                 |                   |  |
|---------------------------------|-------------------|--|
| <b>Arm Size</b> .....           | <b>W</b> = _____  | Width (top face)   |
|                                 | <b>D</b> = _____  | Depth (side face)  |
|                                 | <b>L</b> = _____  | Overall Length   |
| <b>Pin Holes</b> .....          | _____             | Number of Pin Holes  |
|                                 | <b>P</b> = _____  | Pin Hole Diameter  |
|                                 | <b>C</b> = _____  | Center Spacing   |
|                                 | <b>E</b> = _____  | End Distance   |
|                                 | <b>S</b> = _____  | Side Spacing   |
| <b>Brace Bolt Hole</b> .....    | <b>BB</b> = _____ | Brace Bolt Hole Diameter                                       |
|                                 | <b>B</b> = _____  | MHC Brace Bolt Spacing   |
|                                 | _____             | Specify Orientation: <b>V</b> (Vertical) <b>H</b> (Horizontal) |
| <b>Pole Through Bolt</b> .....  | <b>T</b> = _____  | Pole Through Bolt Hole Diameter                                |
| <b>Double Arming Bolt</b> ..... | _____             | Holes Required? <b>Y</b> (Yes) <b>N</b> (No)                   |
|                                 | <b>A</b> = _____  | End Distance   |
|                                 | <b>DA</b> = _____ | Bolt Hole Diameter   |

Please refer to the example for the Crossarm Ordering Template on next page.



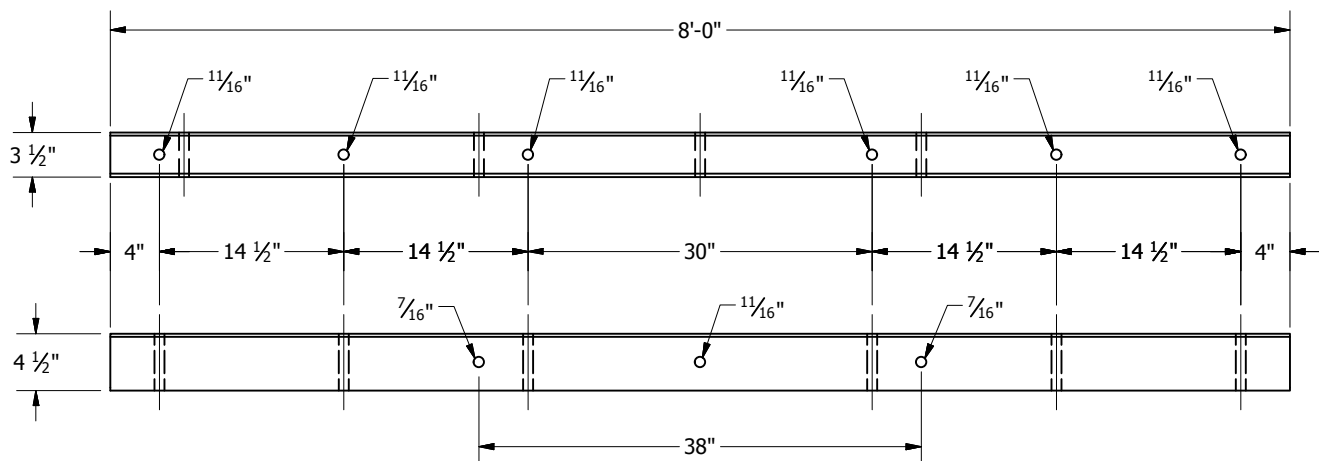
## Douglas-fir Distribution Crossarms

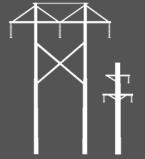
### Boring Specifications

#### Example

For an ordering template completed in the following manner, crossarms would be manufactured as illustrated.

- Arm Size** ..... **W** =  $3\frac{1}{2}$ " Width (top face)  
**D** =  $4\frac{1}{2}$ " Depth (side face)  
**L** = 8'-0" Overall Length
- Pin Holes** ..... 6 Number of Pin Holes  
**P** =  $\frac{11}{16}$ " Pin Hole Diameter  
**C** = 30" Center Spacing  
**E** = 4" End Distance  
**S** =  $14\frac{1}{2}$ " Side Spacing
- Brace Bolt Hole** ..... **BB** =  $\frac{7}{16}$ " Brace Bolt Hole Diameter  
**B** = 38" MHC Brace Bolt Spacing  
H Specify Orientation: **V** (Vertical) **H** (Horizontal)
- Pole Through Bolt** ..... **T** =  $\frac{11}{16}$ " Pole Through Bolt Hole Diameter
- Double Arming Bolt** ..... **N** Holes Required? **Y** (Yes) **N** (No)  
**A** = \_\_\_\_\_ End Distance  
**DA** = \_\_\_\_\_ Bolt Hole Diameter

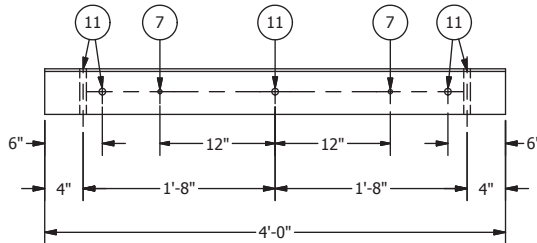




## REA Distribution Crossarms

Drilling guide M19 and cross section dimensions per REA specification 1728H-701

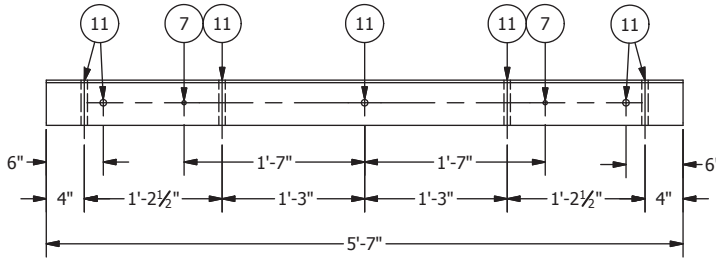
**Type 01**



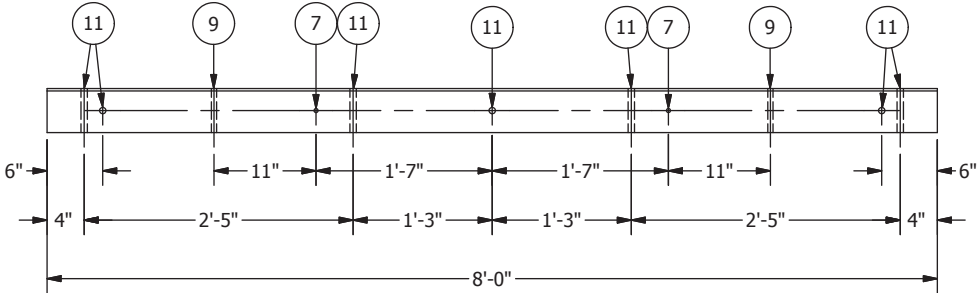
**Hole Size Key**

- ⑦ — 7/16" Diameter
- ⑨ — 9/16" Diameter
- ⑪ — 11/16" Diameter

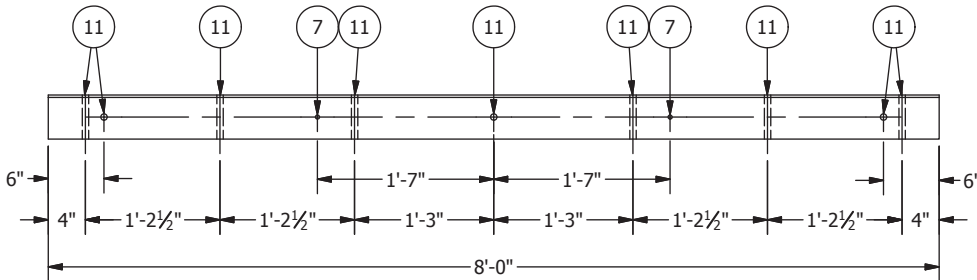
**Type 02**



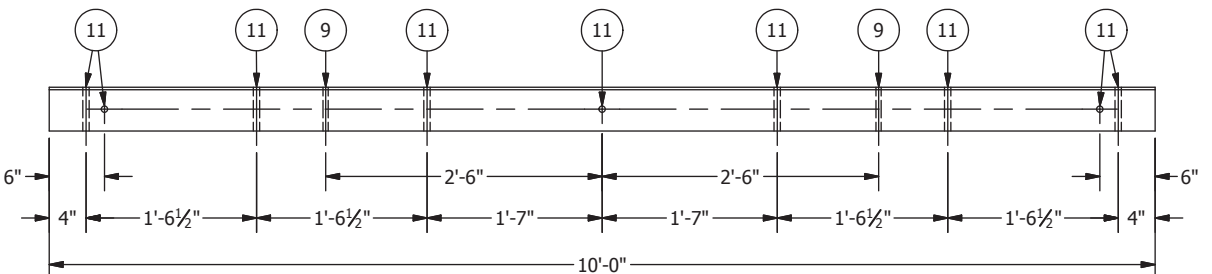
**Type 03**



**Type 04**



**Type 05**



Please contact BROOKS for specific catalog numbers when ordering REA distribution crossarms.