

# TYPE PMDF PRIMARY METERING PAD-MOUNTED SWITCHGEAR 15KV • 25KV • 35KV



Federal Pacific three-phase primary-metering dead-front switchgear (Type PMDF) meet applicable industry standards IEEE 386 for elbow connections and IEEE C57.12.28 for enclosure security, and are available in ratings of 15kV through 35kV. The flexible PMDF design can accommodate several different types of current transformers (CTs) and voltage transformers (VTs), previously known as PTs (potential transformers), providing a convenient, weather protected, tamper-resistant enclosure for revenue metering at primary voltages on underground cable systems.

The PMDF termination compartment features a dead-front steel barrier with six (radial) or nine (loop) Federal Pacific 200 amp bushing wells accommodating load-break inserts and elbows. Optional 600 amp bushings are available. In addition, accessory parking stands and three 1/2" stainless-steel grounding nuts are included. Large door openings provide excellent accessibility for elbow operation. All doors are pad-lockable with rugged three-point latching.

The instrument-transformer compartment has provisions for mounting CTs (current transformers) and VTs (voltage transformers, formerly called PTs).

Instrument-transformers may be customer installed. There are also options for Federal Pacific provided and installed instrument transformers or for customer provided, Federal Pacific installed, instrument transformers. A ground bus is provided and located for easy access to VTs. An insulated, hinged inner barrier with pentahead-bolt closures is standard.

PMDF enclosures, roofs, and doors are 11-gauge hot-rolled steel, all-welded construction. High-quality steel, corrosion-resistant hardware, chemical cleaning, and phosphatizing (or zirconization) corrosion-resistant epoxy-powder primer and a baked powder topcoat make the anti-corrosion coating system a leader in the industry. The standard finish color is pad-mount green, Munsell notation 7GY3.29/1.5. Optional colors are available. Special coatings are available for severe environments. The underside of the roof is coated with a "no-drip" anti-condensation compound.

Primary-metering requirements are also available in custom designs incorporating fusing and switching arrangements as well as optional externally mounted kWh meters and low-voltage compartments. Consult factory for dimensions, configurations, and optional features.



*Elbow Compartment*

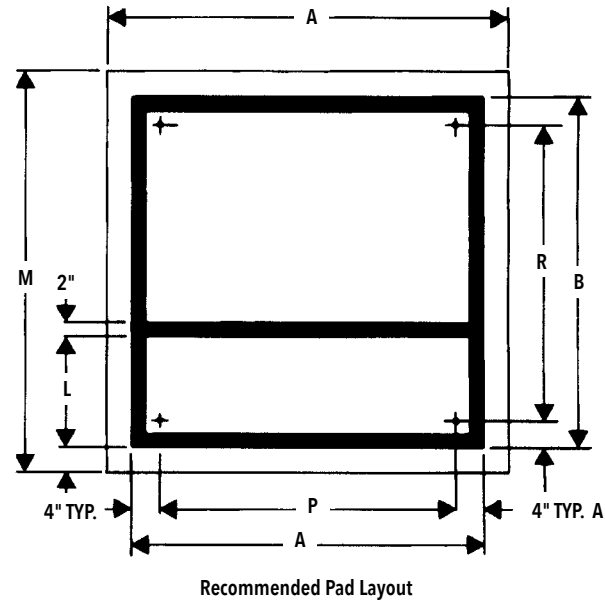
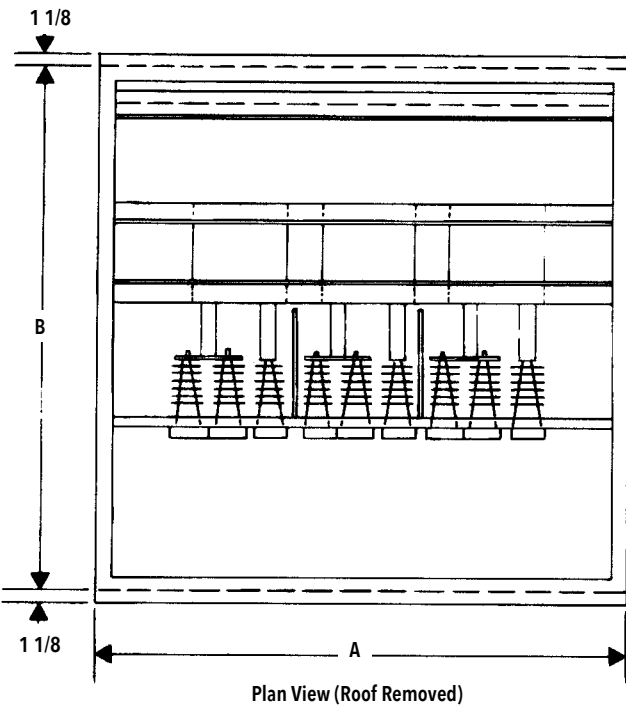
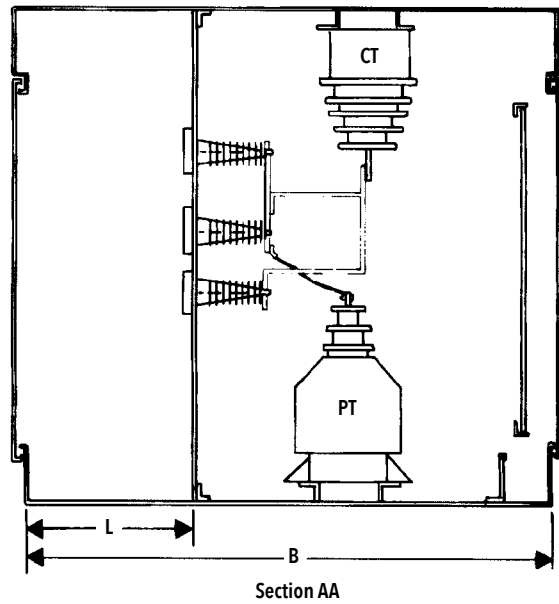
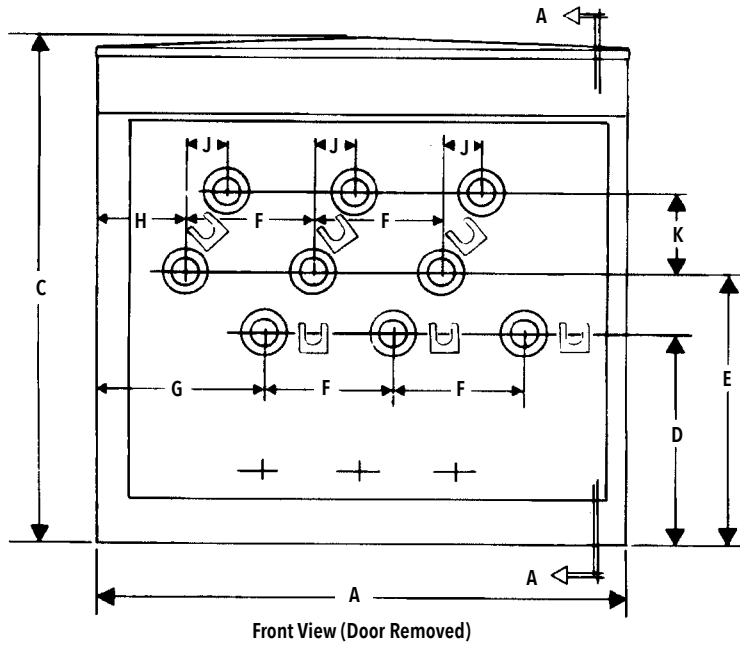


*Metering Transformer Compartment With Hinged Barriers Bolted Closed*



*Metering Transformer Compartment With Barriers Secured Open*

# TYPE PMDF PRIMARY METERING PAD-MOUNTED SWITCHGEAR



Catalog Number	Volt Nom.	kV BIL	Typical Dimensions - Inches*														
			A	B	C	D	E	F	G	H	J	K	L	M	N	P	R
PMDF-315-R6-200	15	95	54	54	51	22	28	14	14	7	NA	NA	22	62	62	46	46
PMDF-315-L9-200	15	95	54	54	51	22	28	14	14	7	5	8-5/8	22	62	62	46	46
PMDF-325-R6-200	25	125	66	66	51	24-1/2	30-1/2	17-1/2	16	8-1/2	NA	NA	24	74	74	58	58
PMDF-325-L9-200	25	125	66	66	51	24-1/2	30-1/2	17-1/2	16	8-1/2	6	8-3/8	24	74	74	58	58
PMDF-335-R6-200	35	150	76	66	53	24-1/2	33	22-1/2	18-5/16	12-9/16	5-5/8	8-1/2	24	74	84	68	58

\*Typical dimensions are provided for a sense of scale, not for construction purposes.