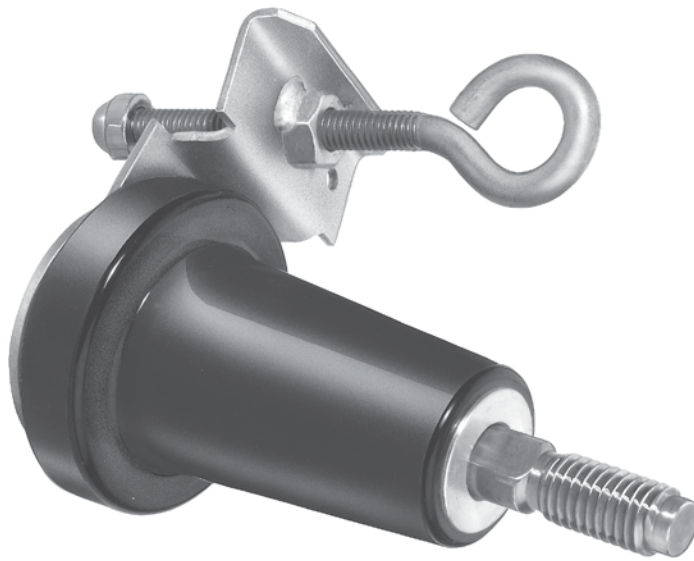


# 600 A 15/25 kV class standoff bushings



## General

Eaton's Cooper Power series 600 A, 15/25 kV insulated standoff bushing meets the full requirements of IEEE Std 386™-2016 standard — "Separable Insulated Connector Systems", and provides a single deadbreak interface made of high quality insulating epoxy material. It is used in pad-mount cabinets, underground vaults and other apparatus to isolate and sectionalize an energized cable.

Temporary or permanent parking of energized 600 A 15/25 kV deadbreak connectors that conform to IEEE Std 386™-2016 standard is simplified with the use of insulated standoff bushings.

The insulated standoff bushing is designed to be installed in the parking stand mounted on a transformer or other apparatus. A drain wire lug is provided on the standoff bracket for attachment of a drain wire to ensure deadfront construction. The bushing provides a fully-shielded, submersible connection for deadbreak operation.

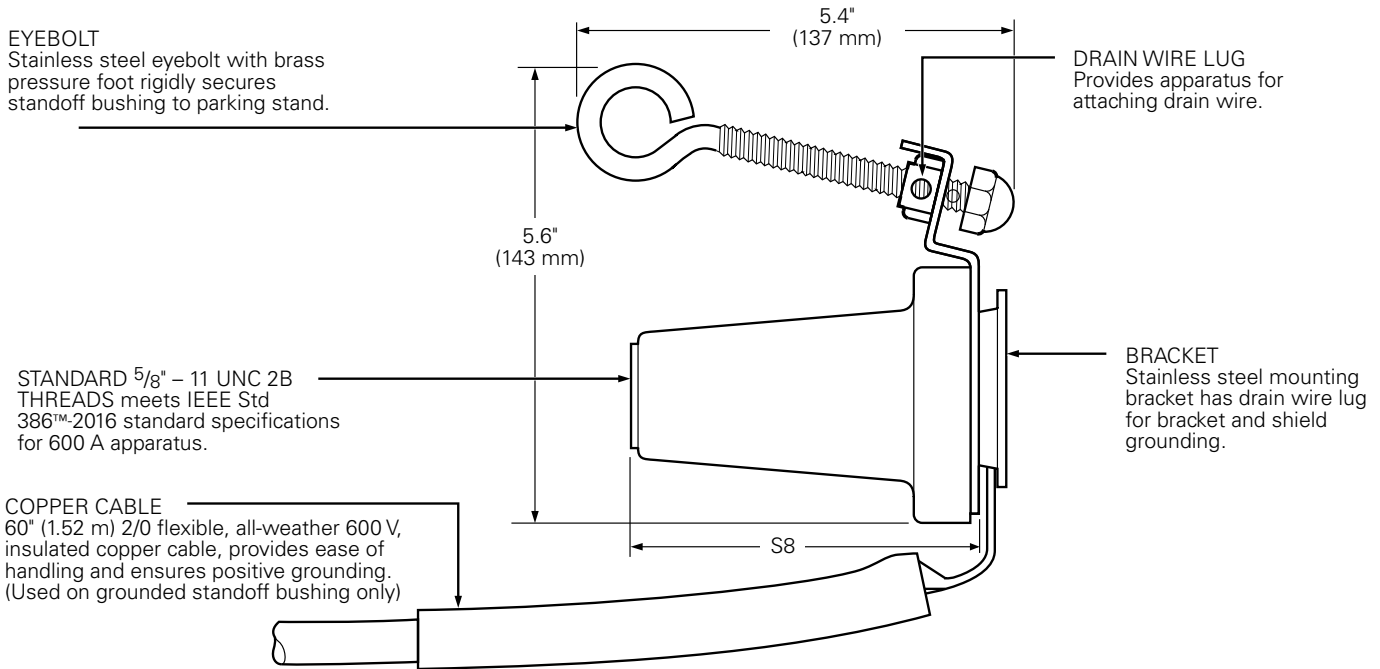
Insulated standoff bushings for T-OP™ II connectors meet all the requirements and features of the standard insulated standoff bushing. They incorporate the appropriate studs which allow for parking of a 600 A T-OP II connector.

Eaton's Cooper Power series 600 A, 15/25 kV grounded standoff bushing is designed to be installed in the parking stand bracket mounted on the transformer or other apparatus. A 2/0 AWG copper, 5-foot jacketed cable is connected to the all aluminum bushing for attachment to system ground. The bushing provides a fully visible ground and submersible connection for temporary or permanent parking of 600 A deadbreak connectors that conform to IEEE Std 386™-2016 standard.

All standoff bushing brackets have a stainless steel eye bolt with a brass pressure foot. The bushing body is bolted to a stainless steel base bracket using a stainless steel bolt. Special pins ensure firm location of the bushing on the bracket.

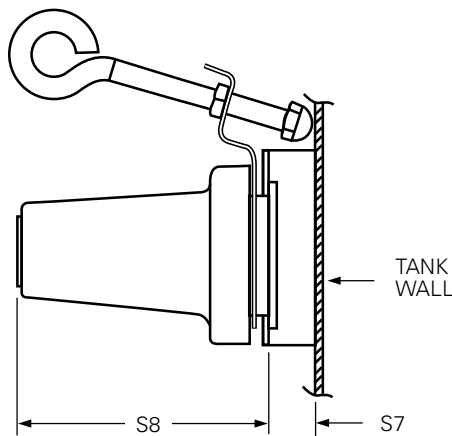
**EAT•N**

*Powering Business Worldwide*



**Figure 1. Diagram shows grounded standoff bushing with five feet of insulated copper.**

**Note:** Dimensions given are for reference only.



15/25 kV		
	Grounded	Insulated
S7	0.75" (19 mm)	0.75" (19 mm)
S8	4.2" (106 mm)	4.2" (106 mm)

**Figure 2. Standoff bushing stacking dimensions.**

### Installation

A hotstick tool is used to place the standoff bushing in the parking stand on the frontplate of the apparatus. Special tools are required to thread de-energized 600 A connectors onto the standoff bushing. Refer to the appropriate connector catalog section for further clarification. Refer to *Service Information MN650036EN 600 A 15, 25, and 35 kV Class Insulated Standoff Bushing Installation Instructions* for details on the insulated standoff bushing. For installation of the grounded standoff bushing, refer to *Service Information MN650045EN 15, 25, and 35 kV Class Deadbreak Grounding Standoff Bushing Installation Instructions* for details.

### Production tests (insulated standoff bushing)

Tests conducted in accordance with IEEE Std 386™-2016 standard:

- ac 60 Hz 1 Minute Withstand
  - 40 kV
- Minimum Corona Voltage Level
  - 19 kV

Tests conducted in accordance with Eaton requirements:

- Physical Inspection
- Periodic Dissection
- Periodic X-ray Analysis

**Table 1. Voltage Ratings and Characteristics – Insulated Standoff Bushing**

Description	kV
Standard Voltage Class	25
Maximum Rating Phase-to-Ground	16.2
ac 60 Hz 1 Minute Withstand	40
dc 15 Minute Withstand	78
BIL and Full Wave Crest	125
Minimum Corona Voltage Level	19

Voltage ratings and characteristics are in accordance with IEEE Std 386™-2016 standard.

**Table 2. Current Ratings and Characteristics – Grounded Standoff Bushing**

Description	Amperes
Short Time	25,000 A rms symmetrical for 0.17 s

Current ratings and characteristics are in accordance with IEEE Std 386™-2016 standard.

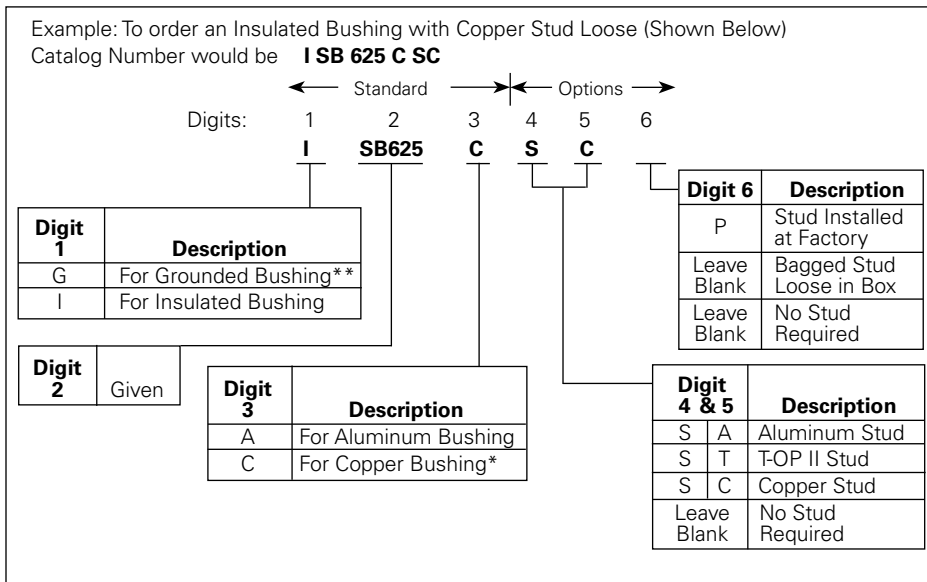
### Ordering information

To order a 15/25 kV Class Standoff Bushing Kit, refer to Table 3.

Each kit contains:

- Standoff Bushing with Bracket
- Shipping Cap (not for energized operation)
- Silicone Lubricant
- Installation Instruction Sheet

**Table 3. Ordering Selection Guide**



\* Eaton recommends when a copper Standoff is designated – use only copper stud.

\*\* Grounded bushing available in aluminum only. Digit 3 will be "A".

**Eaton**  
1000 Eaton Boulevard  
Cleveland, OH 44122  
United States  
Eaton.com

**Eaton's Power Systems Division**  
2300 Badger Drive  
Waukesha, WI 53188  
United States  
Eaton.com/cooperpowerseries

© 2020 Eaton  
All Rights Reserved  
Printed in USA  
Publication No. CA650066EN  
July 2020

Eaton is a registered trademark.  
All other trademarks are property  
of their respective owners.

For Eaton's Cooper Power series standoff  
bushing product information  
call 1-877-277-4636 or visit:  
[www.eaton.com/cooperpowerseries](http://www.eaton.com/cooperpowerseries).