



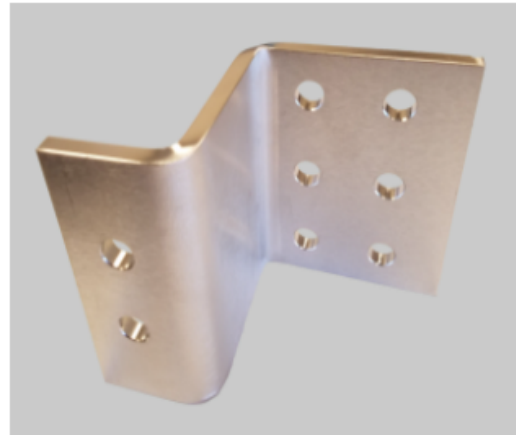
## BUS BAR

### WHAT IS A BUS BAR?

Bus bar is a strip or bar of copper or aluminum that functions as a conductor of steady electrical current.

### WHY DO WE USE BUS BAR?

Bus bar provides an efficient and repeatable way to consistently distribute power to a wide array of system loads. A typical bus bar is designed to carry a variety of current loads without having to change any other parts of the system. Bus bar systems are preferred because of unique advantages like flexibility, safety, and their ability to reduce costs.



### TYPICAL APPLICATIONS

- Factories
- Data centers
- Retail facilities
- Laboratories
- Hospitals
- Universities
- Technology settings
- Industrial Power Consumers
- Power Distribution
- Nuclear
- Mining
- Alternative Energy Power
- Transportation

### BUS BAR CAPABILITIES

Material	High Conductivity Copper
Length	Up to 12' feet
Width	0.75-6" inches
Thickness	.25-2.00" inches
Current	Up to 25,000 A
Voltage Rating	Up to 600 A
Plating Options	Tin and Silver Electroplating